

Automatic scheduling of related Jobs

Jobs that are related can be "linked" together so that a change in the timing of one job can automatically update the schedule for another.

Time Scales & Cost Information

Available side by side in all cost views.

Choice of Timescales

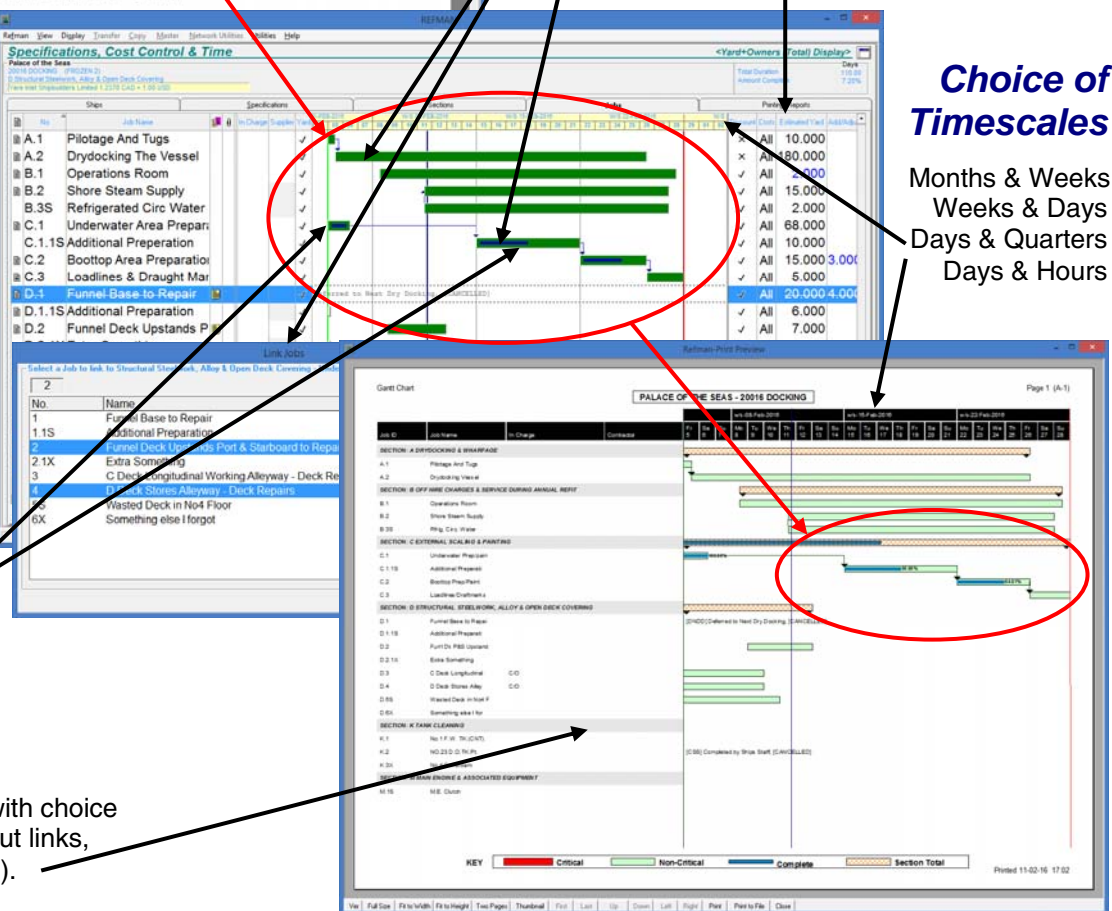
Months & Weeks
Weeks & Days
Days & Quarters
Days & Hours

Progress of each Job displayed on screen

See at a glance which jobs are complete, which have not been started and which are in progress along with the proportion of work that has been completed.

Printed time bar (Gantt) Chart

Generated automatically with choice of presentation (with/without links, with/without grid lines, etc.).



Overview

REFMAN's Time Management Module has been designed to provide people who are not project management 'experts' with a quick and simple means of keeping track of the progress of jobs during a repair period.

To achieve this, REFMAN automatically creates the framework for scheduling jobs and project planning as the specification is created and is updated automatically whenever jobs are added, deleted or cancelled from that specification. REFMAN also provides a means by which shipyards can supply the estimated start dates and durations for each job electronically so that these can be loaded automatically. Times and durations for other jobs

which are to be carried out by sub-contractors, specialists or ship's crew can then be added. REFMAN's Time Management module then combines this to produce a simple time bar (Gantt) chart which gives a pictorial representation of when each job is expected to start, how long it should take and when it should be finished.

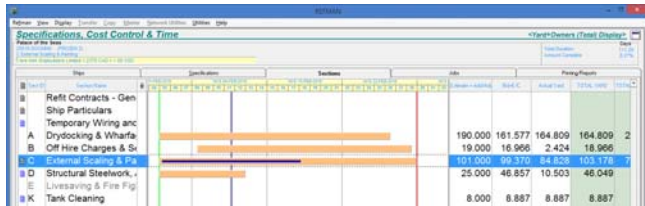
All the Superintendent needs to do to keep this up to date during the repair period is to record which jobs are complete, which jobs are behind schedule and use the built-in "Update" option to set an approximate percentage complete for the remainder. The built-in "Reschedule" option can then be used to produce an up to date time bar (Gantt) chart showing exactly what is outstanding.

REFMAN - Time Management Module

Provides the Superintendent or Port Engineer with facilities to schedule and monitor the progress of all jobs in a REFMAN specification. For each job it is possible to record start date & duration and optionally, specify which jobs must be completed before the next job can start, which jobs must at least have started before the next job can start and which jobs must be finished before the next job can be completed.

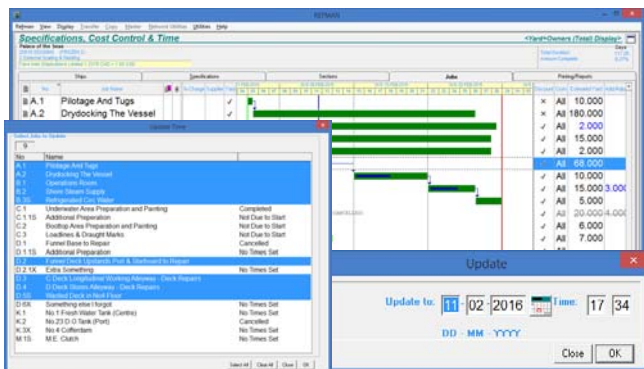
Features

- Complete monitoring of the progress of jobs without the need to learn complicated project management software.



Section progress summary shows overall progress (on its own or alongside cost information in Cost Views).

- Facility to enable the Shipyard to supply the estimated duration and start day (an actual date or a "day number" during the docking) electronically. This information can be requested as part of REFMAN's electronic Yard Quotation Package' and loaded up automatically.
- Schedule and monitor jobs carried out by owner's contractors, other specialists and ships crew.
- Full range of links including "later job cannot start before earlier job finishes", "later job cannot start before earlier job starts" and "later job cannot finish before earlier job finishes".

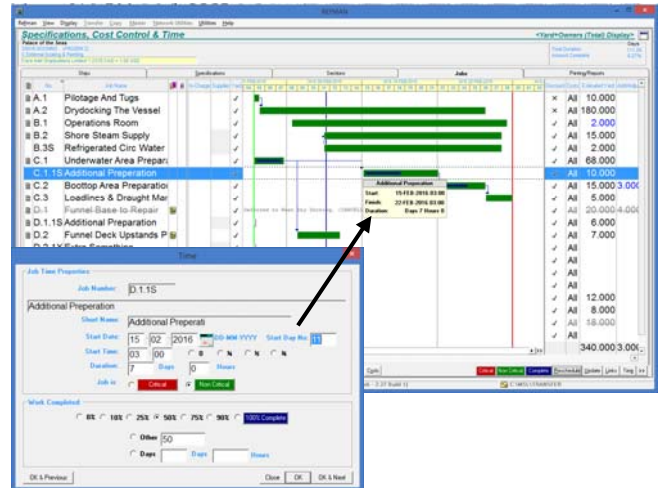


See the progress of each individual job with automatic updating.

- Automatic updating of "Percentage Complete" for jobs that are "on schedule". Update just selected jobs; "all" jobs in a single section; all jobs in "selected" sections or all jobs in "all" sections in a specification".
- Automatic "Rescheduling" of incomplete jobs. Reschedule just selected jobs; "all" jobs in a single section; all jobs in "selected" sections or all jobs in "all" sections in a specification.

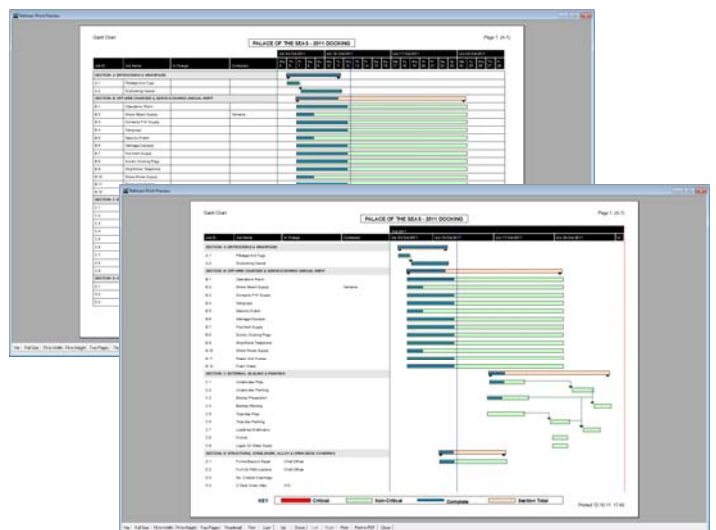
... ideal companion to REFMAN's Specification Generator & Cost Control Modules.

- If an earlier job is re-scheduled and this affects other later jobs (i.e. "linked" jobs) then the later jobs will be re-scheduled automatically. If a later job is re-scheduled which is affected by a link to an earlier job, the user will be prompted whether or not to remove the link.



Easy to use, just "drag and drop" to set times & durations.

- Choice of conventional numerical input for "dates & times" or simple to use on-screen "drag and drop" for both scheduling jobs and setting durations.
- On-Screen indicator in section view with pop-up information box to indicate that one job is linked to other jobs in different sections of the specification.
- Automatic Generation of time bar (Gantt) chart for the entire specification or just the jobs in a particular section.



Options to control appearance and scale of printed time (Gantt) chart.

- Flexible printing options which allow time bar (Gantt) chart to be printed with a choice of timescales, with or without links & with and without "gridlines" on the text and/or on the time bars.

System Requirements: As per REFMAN's Specification Generator or Cost Control modules.